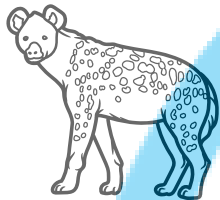
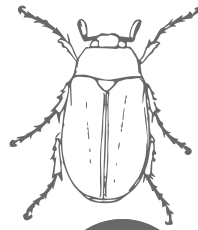
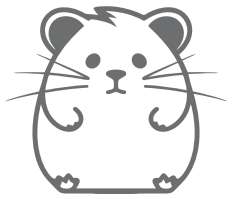
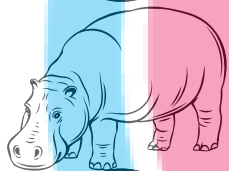


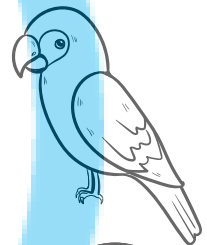
CH



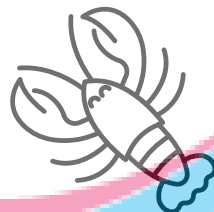
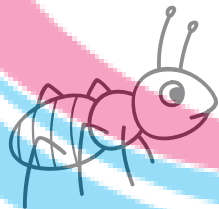
U



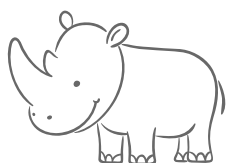
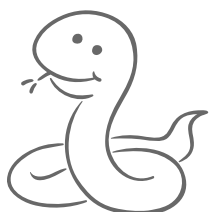
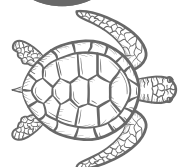
H



Ó



RZ



Ż

CH

CHOMIK

CHRABĄSZ

MUCHA

HIENA

CHRZĄSZCZ

HUSKY

U

HIPOPOTAM

HARPIA

H

PAPUGA

Ó

MRÓWKA

HOMAR

NIETOPERZ

RZ

NA POLSKI

JASTRZĄB

ŻABA

ŻÓŁW

WĄŻ

NOSOROŻEC

ŻYRAFA

Ż